

Butts County School System Meal Plan SY20/21

# Back to School with School Nutrition

**Thank you so much for supporting our program**

## School Meals Service Model for Virtual Learners

Please see your school menus available on the BCSS school website: <https://www.bcsc12.org>

Virtual meals will be offered at the bus ramp at all schools. Middle and Elementary school SNP staff will be on the bus ramp for meal service between 10:30 - 11:15am. High School meals will be available on the bus ramp 11:00 - 11:45am.

Service model will include meals being served on Monday - 1 hot meal, 1 cold lunch and two cold breakfasts, with milk choice available. Wednesday meal service will include- 1 hot meal, 2 cold lunches and three cold breakfasts, with milk choice available. Parents are urged to pick up meals at their students assigned school but it is not a requirement.

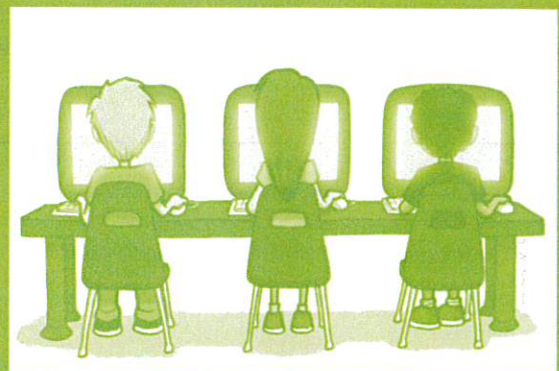
Student Allergies: All student allergies will need to be documented with SNP manager and student flagged on classroom roster. Meal tray will be labeled with the students name and allergen.

Traditional delicious hot meals will be enjoyed by all. With plenty of choices included in meal packages to tantalize all taste buds.

**Proper safety measures practiced at all times**

Please email Nicole James ([jamesn@bcsc12.org](mailto:jamesn@bcsc12.org)) for any questions or concerns.

All service models and menus subject to change



“USDA is an equal opportunity provider and employer”



Butts County School System Meal Plan SY20/21

# Back to School with School Nutrition

**Thank you so much for supporting our program**

Elementary School Service Model for Face to Face Learning

Please see your school menu located on the Butts County School System Website

**Breakfast Model (Grab and Go):** Meals will be served from breakfast carts and enjoyed in the classroom.

**Lunch Model (Classroom):** Plated at classroom scheduled time, in a covered takeout plate, and placed on buggy for delivery to classroom . Meals will be plated at time of delivery to ensure proper food temps and food quality. Students will have a choice of milk to accompany their meal.

**Lunch Model (Cafeteria):** Students will come through the line and receive their meal, which is plated for them. Social distancing will be practiced within the serving lines and the in cafeteria.

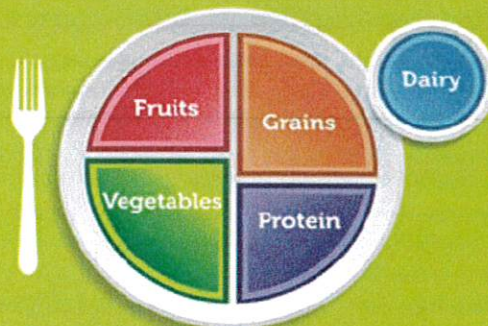
**Student Allergies:** All student allergies will need to be documented with SNP manager and student flagged on classroom roster. Meal tray will be labeled with the students name and allergen.

Traditional delicious hot meal will be enjoyed by all, with plenty of choices to tantalize all taste buds. Salad and PB&J options will be available for students daily.

**Proper safety measures practiced at all times**

**Please email Nicole James ([jamesn@bcssk12.org](mailto:jamesn@bcssk12.org)) for any questions or concerns.**

All service models and menus subject to change



“USDA is an equal opportunity provider and employer”